

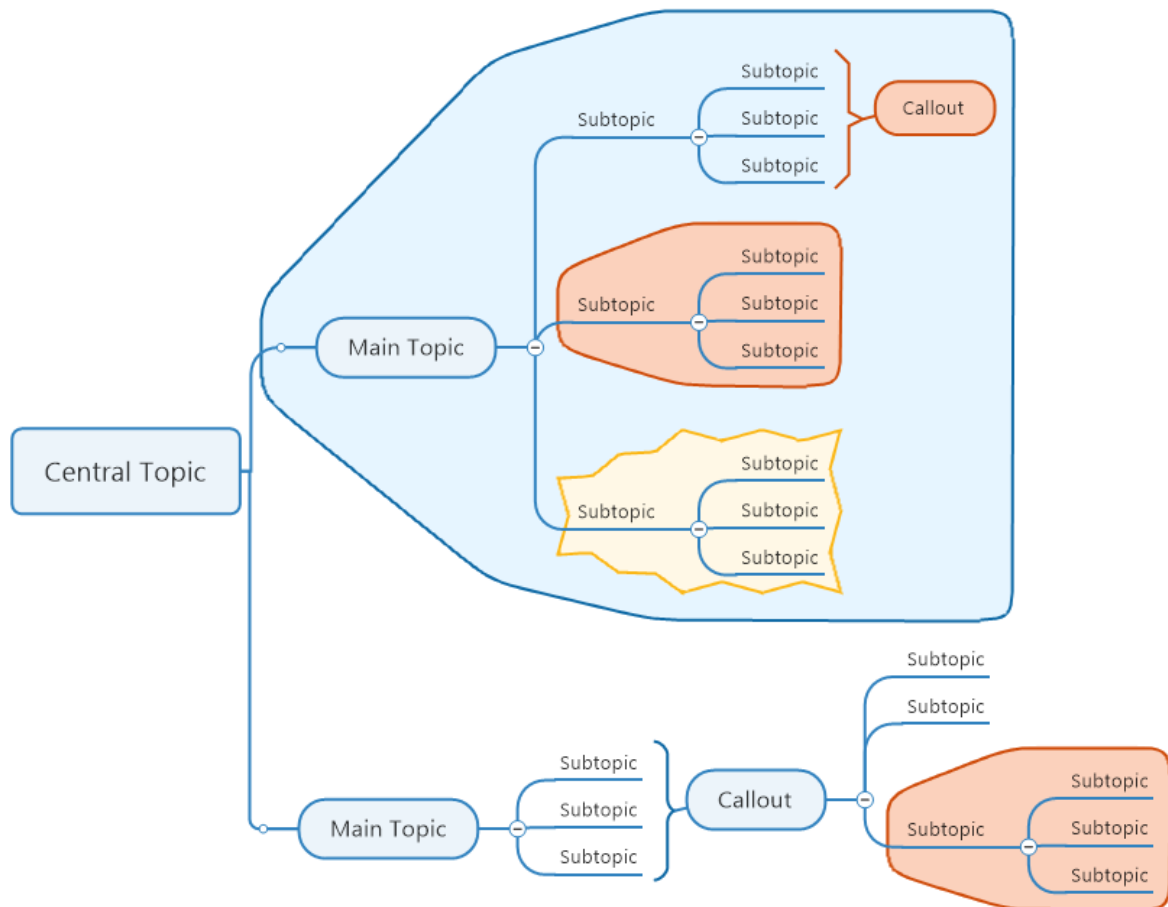
My question was what is purpose of the "Boundary" function? **To Show relation and "shield off" non-related information.** Will it be collapsible in future versions of the software?

It is collapsible

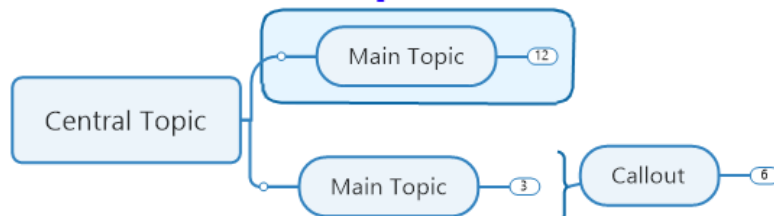
Is it possible to get a boundary for elements of different levels that belong to different subtopics?

You can insert boundaries on any topic in any position, and boundaries inside of boundaries

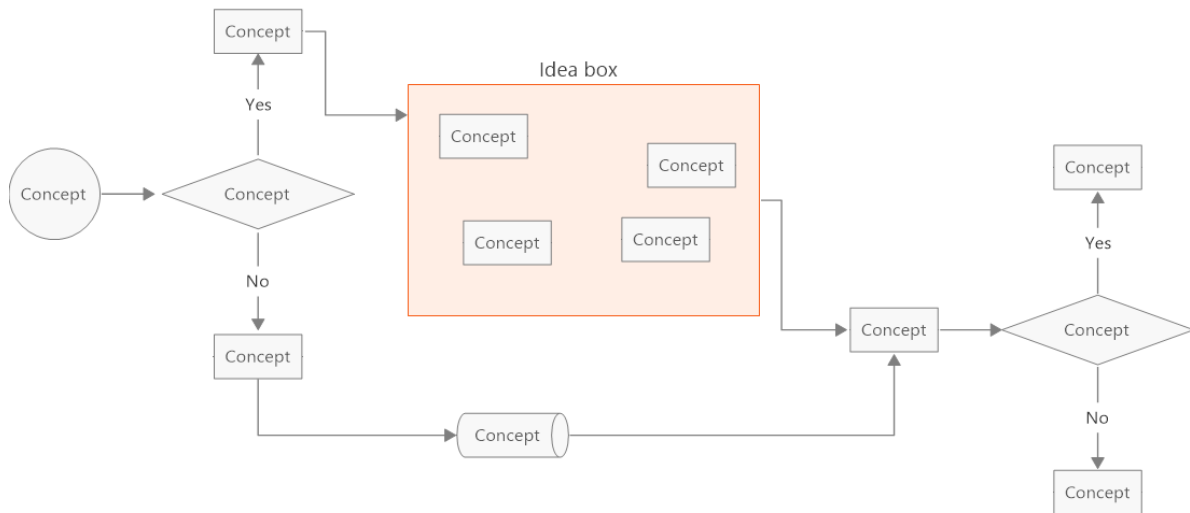
Expanded



Collapsed



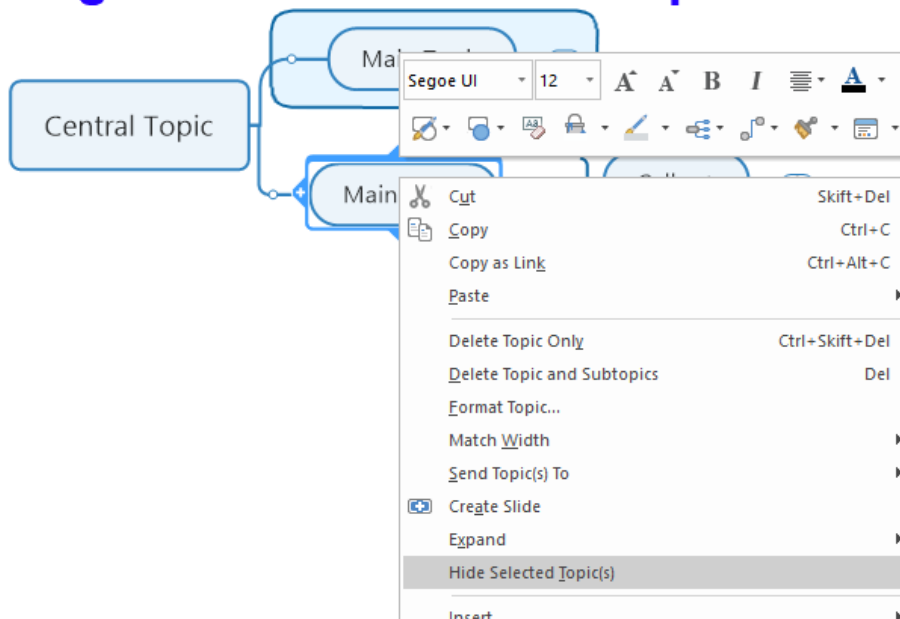
You would not use boundaries in a flowchart as they build on hierarchical order, which does not exist in a flow. For a flow, please use Elements, such as Shapes. (found under insert menu)



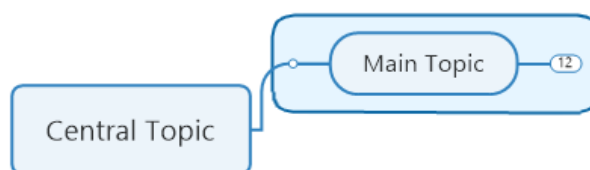
I really miss this function in the software. Collapsable boundary would add more functionality to the layout of the mind map. It will work to the same manner as the filter option in Excel hides some lines that are not important at this moment.

Not sure I understand the question, but if you collapse a branch, the boundary collapses with it.

Right click one or more topics



Topics hidden



I presume not all versions of MindManager (Windows, Mac and so on) contains all the functions, and that the Windows version is the most comprehensive?

Correct, Windows has the largest feature set, closely followed by Mac. As always with web versions, there are limitations in what we can do, but most of the main features are implemented.

HTML 5 export is great but I also publish using "Export as Web pages" to our intranet. Is there a search function (search box) in an export from the most recent version of MM or is a search box planned? Is export as web pages still actively developed or has that been taken over by the HTML 5 export?

The "Export to Web" is not developed further simply as it becomes redundant with the Publish feature that holds way more possibilities. May I suggest publishing and using the "Imbedded" feature on your intranet, containing the search and filter option.

MindManager®

Share Published

View Genetics.mmap
Privately published

Share Link

Share this link with anyone you want to view your published map.

Copy Link

Embed

Copy and paste this code to embed your published map in blog or website.

Copy

Post on Social Media

Post your published map to your social media accounts.

Advanced Options **Done**

If you are interested in learning more about the possibilities in MindManager, I strongly recommend taking the Starter Academy training:

<https://www.mindmanager.com/en/resources/starteracademy/>

And also to sign up for our Meet the Experts Webinar, where we showcase features and answer questions from the Live Chat.